

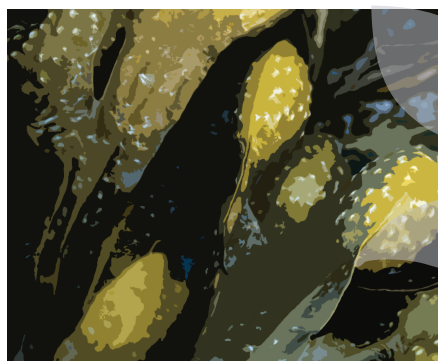
DELIVERING INNOVATION



# SBC™ ALGAFLEX™

PLANT NUTRIENT

0.2 - 0.2 - 1.6



## GUARANTEED ANALYSIS

Total Nitrogen (N) ..... 0.2%  
0.2% Water Insoluble Nitrogen  
Available Phosphate (P<sub>2</sub>O<sub>5</sub>) ..... 0.2%  
Soluble Potash (K<sub>2</sub>O) ..... 1.6%  
Sodium (Na) ..... 2.5%

Derived from Kelp extract (*Ascophyllum nodosum*)

## DIRECTIONS FOR USE

SBC Algaflex is a highly concentrated liquid kelp extract of *Ascophyllum nodosum* for use as a soil or foliar nutrient. The typical dilution rate for most crops is 14 to 24 ounces per acre. Apply as needed.

APPLICATION	RATE
Soil	1-2 pts/acre
Foliar	14-24 oz/acre

## COMPATIBILITY

SBC Algaflex is a plant nutrient. User assumes sole responsibility for non-phytotoxic compatibility with specific crops or with other materials when such use or handling are contrary to label instructions.

## CAUTION

### KEEP OUT OF REACH OF CHILDREN

Harmful if swallowed. Avoid contact with skin, eyes or clothing. Avoid breathing spray mist.

If swallowed, dilute with water and immediately contact medical help. Do not inhale fumes or vapors. Eye contact: Flush eyes with water for 15 minutes and contact physician immediately. When handling, wear impervious gloves and goggles with face shield. If spilled, contain and reclaim for water use. Avoid further contact.

## NOTICE TO BUYER

Seller makes no warranty, expressed or implied, concerning the use of this product other than as indicated on this label. Buyer assumes all risks of handling this material when such use and/or handling are contrary to label instructions.

Information regarding the contents and levels of metals in this product is available on the internet at:  
<http://www.aapfco.org/metals.html>

AZ/CA/OR/WA  
2022

\_\_\_\_ Gallons \_\_\_\_ Liters \_\_\_\_ Bulk  
Density: 9.55 pounds per gallon at 68°F



Scan the QR code  
for product and  
safety information